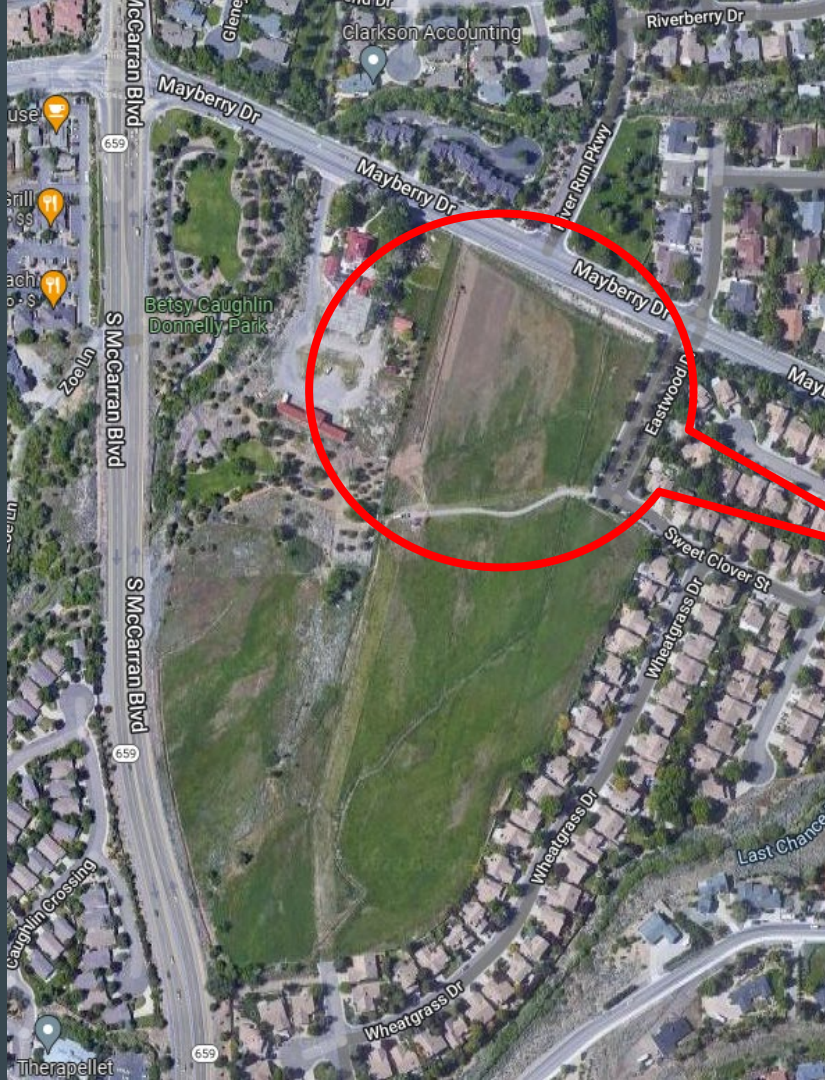




Our vision is a vibrant, resilient and just local
food system, cultivated by an empowered
community



We are farmers, mentors, and advocates stewarding lands
and sharing food & resources for the well-being of our earth,
community, and future generations



Betsy Caughlin Donnelly Park

3295 Mayberry Dr

North 5 acre
parcel Leased
to Reno Food
Systems in 2018

Reno Food Systems! (May



Park Farm 2020

An aerial photograph of Park Farm in 2020. The image shows a large agricultural area with several rectangular plots of crops, some covered with white plastic mulch. To the right of the main crop area, there are several large, flat, rectangular areas that appear to be under construction or recently cleared, with some debris and equipment visible. A small building with a white roof is situated near these areas. In the foreground, a road with several cars is visible, and the text 'Mayberry Dr' is overlaid on the bottom right. The background features a line of trees and a residential area.

Mayberry Dr

Park Farm 2024





We operate 4 programs
working to create a
local food system

A close-up photograph of blackberry bushes. Several large, dense clusters of ripe, dark purple-black berries hang from the stems. The leaves are green and serrated. The background is a clear blue sky. A dark grey banner with white text is at the bottom.

1. Land Stewardship Program

Regenerative Agriculture



Animal Husbandry



Annual Crop Production



Food Forest and Heritage Orchard





Nursery



Farm Stand



2. Food Justice



In 2020, Nevada had the
highest child food
insecurity rate in the
nation—tied with
Louisiana at an alarming
32.3%!



Food For All - Fresh Produce and Seedling Donations



Together We Thrive - Prepared meal distribution and Cookbook



Serving Our Seniors



WELCOME TO THE
PARADISE PARK COMMUNITY GARDEN

Volunteer with Us!
Every Tuesday
7 a.m. - 12 p.m.
2745 Elementary Drive
89512

There are also rental plots available to the public each season starting in April through October. If you would like to learn more, please reach out to the Garden Coordinator at:

communitygarden@renofoodsystems.org

Check us out on the web for more info and updates at: renofoodsystems.org and on social @renofoodsystems

HOPE TO SEE YOU HERE!



Healthy Corner Store Initiative



3. Education Program







thisisreno





4.Arts and Healing Program



Climate Cafe

& Walking Meditation

at Park Farm 3295 Mayberry Drive



Sunday
August 18
9-10:30 AM



with Caitlyn Wallace
& Melissa Gilbert

RSVP to info@renofoodsystems.org



Our 2024 Impact

Growing Food, Feeding People & Building Community

4,056



Number of meals prepared for community members in need

658



Number of seedlings donated to community gardens

27



Community Partner Organizations collaborated with to strengthen Food Security

2,000



Hours donated by volunteers
for the farm and events

43/500+



Workshops offered free to the
public educating over 500 people

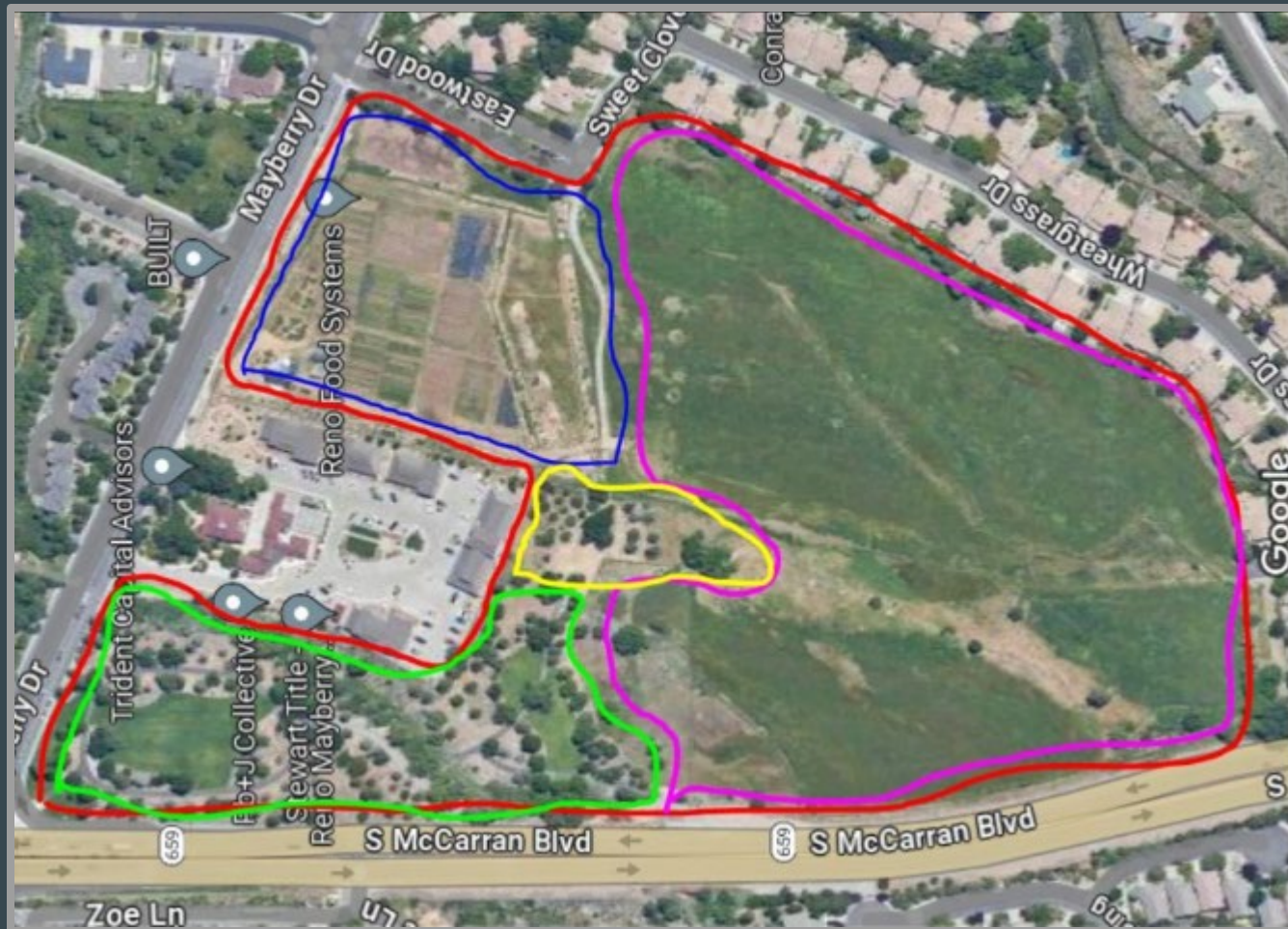
6,012



Pounds of produce donated
to community partners



Our Vision for the Future





MAGGIE EILEEN



Globemallow

NDA
Foundation
Seed
Program



Bottlebrush Squirreltail Project (NDA Contracted Seed Grow Out Program)



Thank You!

